

Monday 10/19/09

Nanodrop of miniprep Pu/GFP and PrXylR/LeuLP ligation products

A nanodrop was performed for the 7 samples that were miniprep yesterday according to the protocol on 7/25/09

Digestion of miniprep Pu/GFP and PrXylR/LeuLP ligation products

A digest will be performed for all of the samples miniprep yesterday according to the protocol on 7/25/09 for 6 hours. The reagents will be mixed in the following proportions:

Amounts (uL)	Pu GFP 1:1 #1	Pu GFP 1:1 #2	Pu GFP 1:3 #1	Pu GFP 1:3 #2	Pu GFP 1:6 #1	Pu GFP 1:6 #2	Pr LeuLP 1:3
Ultra pure water	40.75	40.75	40.75	40.375	41	40.2	38.5
NEB 2 Buffer	5	5	5	5	5	5	5
BSA	0.5	0.5	0.5	0.5	0.5	0.5	0.5
DNA	2.75	2.75	2.75	3.125	2.5	3.3	5
EcoRI	1	1	1	1	1	1	1

Gel of digested Pu/GFP and PrXylR/LeuLP

A gel was run of the above digestion samples with the cut backbone used in the ligation as a reference according to the protocol on 7/27/09.

Submitting Parts to the Registry

1. In a single PCR tube dilute DNA
 - a. The concentration cannot be lower than 2ng/uL
 - b. Add 2 uL of DNA to 8 uL of ultra pure water
2. Wrap the PCR tube with label tape and give each tube a number
3. Cap the PCR tube and place inside a 50 mL falcon tube
4. Follow the instructions for submitting DNA on the registry

Results

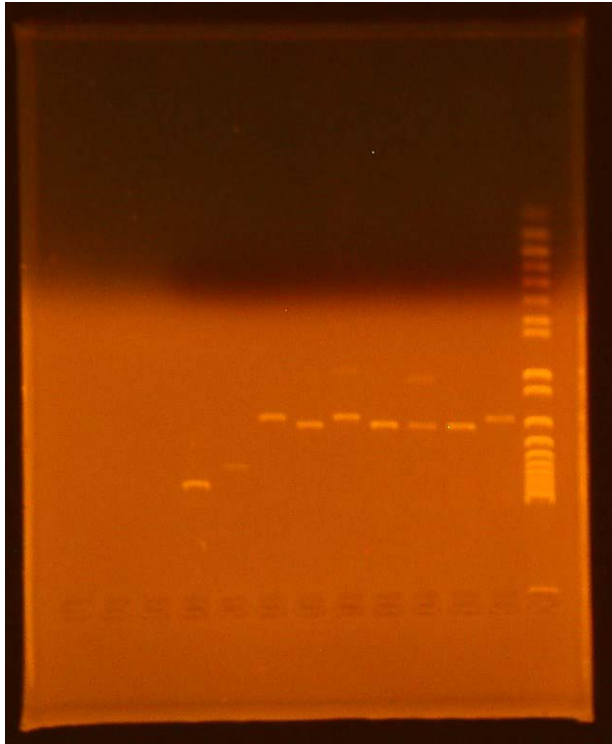
Nanodrop of miniprep Pu/GFP and PrXylR/LeuLP ligation products

10/19/2009 9:42 AM

Sample ID	ng/uL	A260	260/280	260/230	Constant
Pu/GFP 1:1 #1 ligation	182.22	3.644	1.90	2.30	50
Pu/GFP 1:1 #2 ligation	183.83	3.677	1.86	1.84	50
Pu/GFP 1:3 #1 ligation	181.75	3.635	1.90	2.30	50

Pu/GFP 1:3 #2 ligation	166.33	3.327	1.92	2.32	50
Pu/GFP 1:6 #1 ligation	202.72	4.054	1.89	2.02	50
Pu/GFP 1:6 #2 ligation	148.52	2.970	1.83	1.49	50
PrXylR/leuLP 1:3 ligation	108.05	2.161	1.92	2.28	50

Gel of digested Pu/GFP and PrXylR/LeuLP



- Lane 1 (far right): Invitrogen 1 kb plus ladder
- Lane 2: GFP backbone used in the ligation
- Lane 3: Pu 1:1 #1
- Lane 4: Pu 1:1 #2
- Lane 5: Pu 1:3 #1
- Lane 6: Pu 1:3 #2
- Lane 7: Pu 1:6 #1
- Lane 8: Pu 1:6 #2
- Lane 9: LP backbone used in the ligation
- Lane 10: PrXylR 1:3

The expected length of the Pu/GFP ligation is approximately 2450 bp

- Pu: 370 bp
- GFP: 2080 bp

The expected length of the PrXylR/leuLP ligation is approximately 8140bp

- PrXylR: 2340 bp
- leuLP: 5800 bp