

10th, August

12:00

Miniprep: PET30a

Store the strain of BL21plys and Rosella

16:00

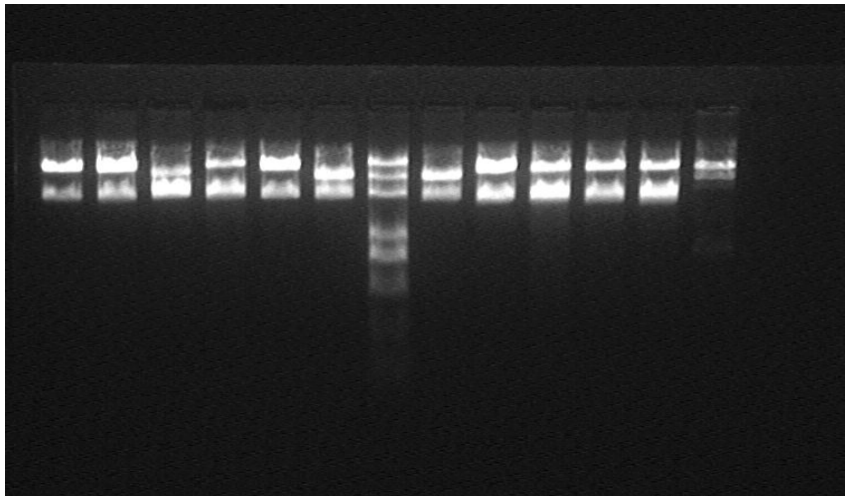
Induce: till $OD_{600}=0.35$

Arabinose gradient: 10^8X , 10^6X , 10^5X , 5×10^4X , 10^4X , 5×10^3X , 10^3X

11st, August

15:00

Double enzyme digestion (back vector and back insert)



24:00

Double enzyme digestion: pcrS1

12nd, August

17:00

Ligation

Insert: pla1, pcr1

Vector: SupD+T

21:00

Transformation

13rd, August

14:00

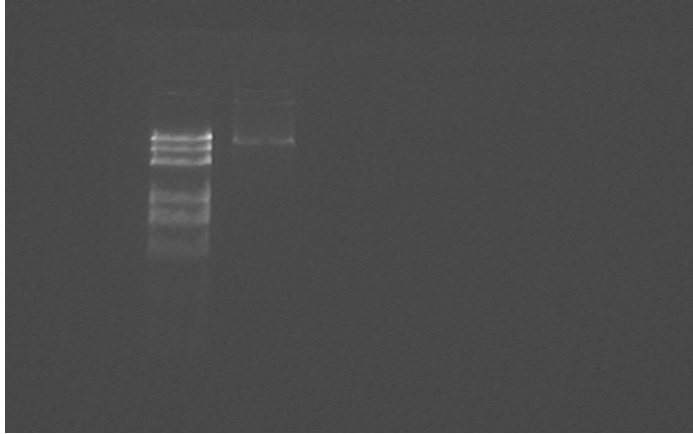
Grow the bacteria of pla1+SupD 1~6, pcr1+SupD 1~6

16:00

Miniprep: pcrS4

17:00

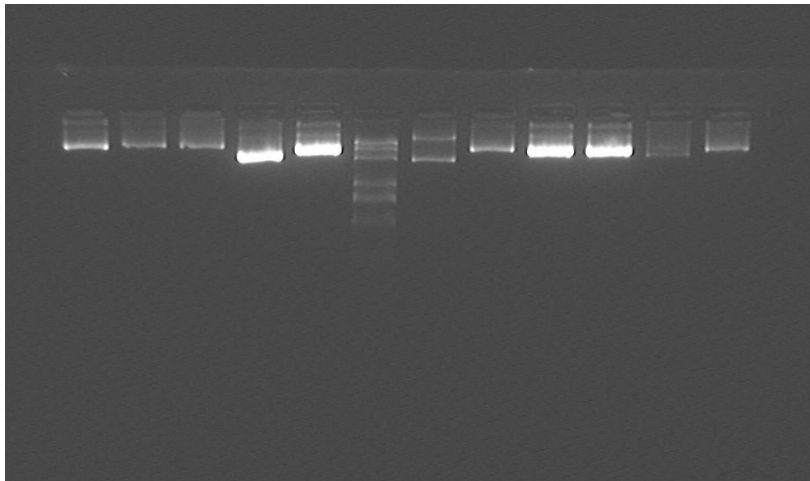
Double enzyme digestion: pcrS4



14th, August

11:00

Miniprep: pcrS1, 3~6, plaS 1~6

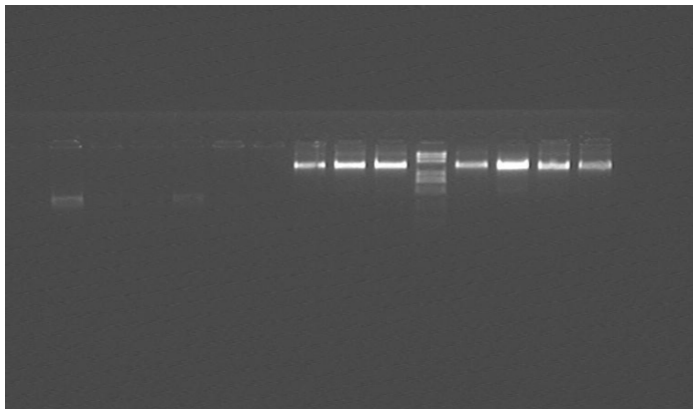


14:00

Double enzyme digestion (pla2, pcr2, pcrS6, plaS3, plaS4)

18:30

PCR: pla1+SupD, pcr1+SupD



00:10

Double enzyme digestion: plaS4, pcrS6(back vector)

15th, August

11:00

DNA purification: plaS4, pcrS6

12:00

Ligation

Insert: 1H①, 5J③, 2G⑤, 2K⑤, 11N③

Vector: SupD+T

22:30

Transformation: Ligation product