

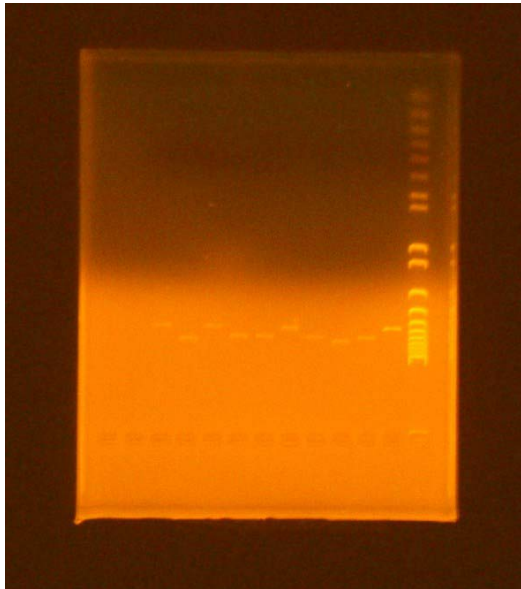
Wednesday 9/16/09

Gel of digested Pu GFP leu landing pad ligation with EcoRI

A gel was run according to the protocol on 7/27/09 but the voltage was set for 74 V instead for better resolution.

Results

Gel of digested Pu GFP leu landing pad ligation with EcoRI



Lane 1: Invitrogen 1 kb plus ladder (far right)

Lane 2: digested leu landing pad backbone with EcoRI and PstI used for the ligation

Lane 3: 1:1 #1 ligation

Lane 4:1:1 #2 ligation

Lane 5: 1:1 #3 ligation

Lane 6:1:3 #1 ligation

Lane 7: 1:3 #2 ligation

Lane 8:1:3 #3 ligation

Lane 9: 1:6 #1 ligation

Lane 10:1:6 #2 ligation

Lane 11: 1:6 #3 ligation

The expected product is 7193 bp

It looks like many of the products ligated successfully and will be checked by sequencing.