

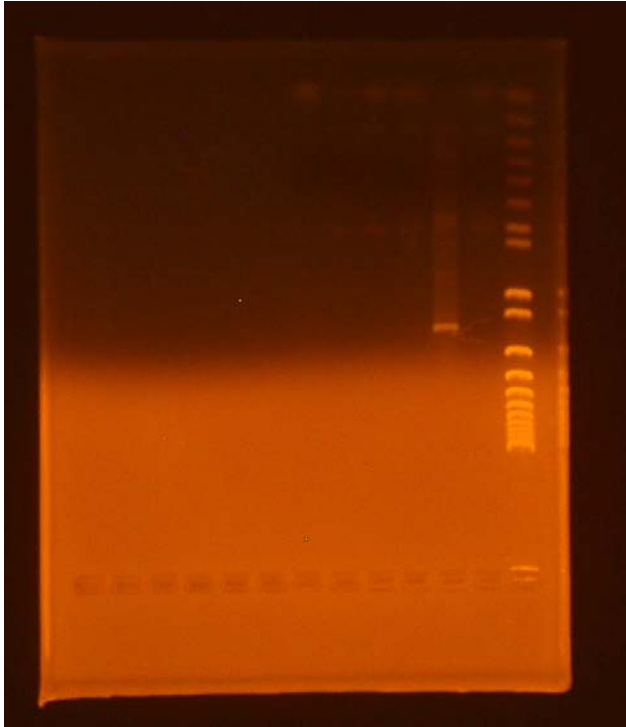
Tuesday 10/6/09

Gel of Colony PCR PrXylR

A gel was run according to the protocol on 7/27/09 for the colony PCR of PrXylR performed yesterday.

Results

Gel of Colony PCR PrXylR



Lane 1 (far right): 1 kb plus invitrogen ladder

Lane 2: sample 1 (lower initial annealing temperature)

Lane 3: sample 2

Lane 4: sample 3

Lane 5: sample 4

Lane 6: sample 5

Lane 7: sample 6 (higher initial annealing temperature)

Expected length of 2338

Weak bands indicate primer dimer issues and unspecific amplification. Since there is a streak that resulted from the product, a gel purification will be performed to remove the undesired products.