

## Wednesday 7/29/09

### *Frozen stock of Pu luciferase biobrick part*

- Pellet 1 mL of culture at 14000 rpm for 2 minutes
- Remove supernatant and resuspend in 500 uL of LB
- Add 500 uL of 50% glycerol solution
- Place in the IGEM -80C freezer box

### *Run gel of digested lambda and T4 killer genes*

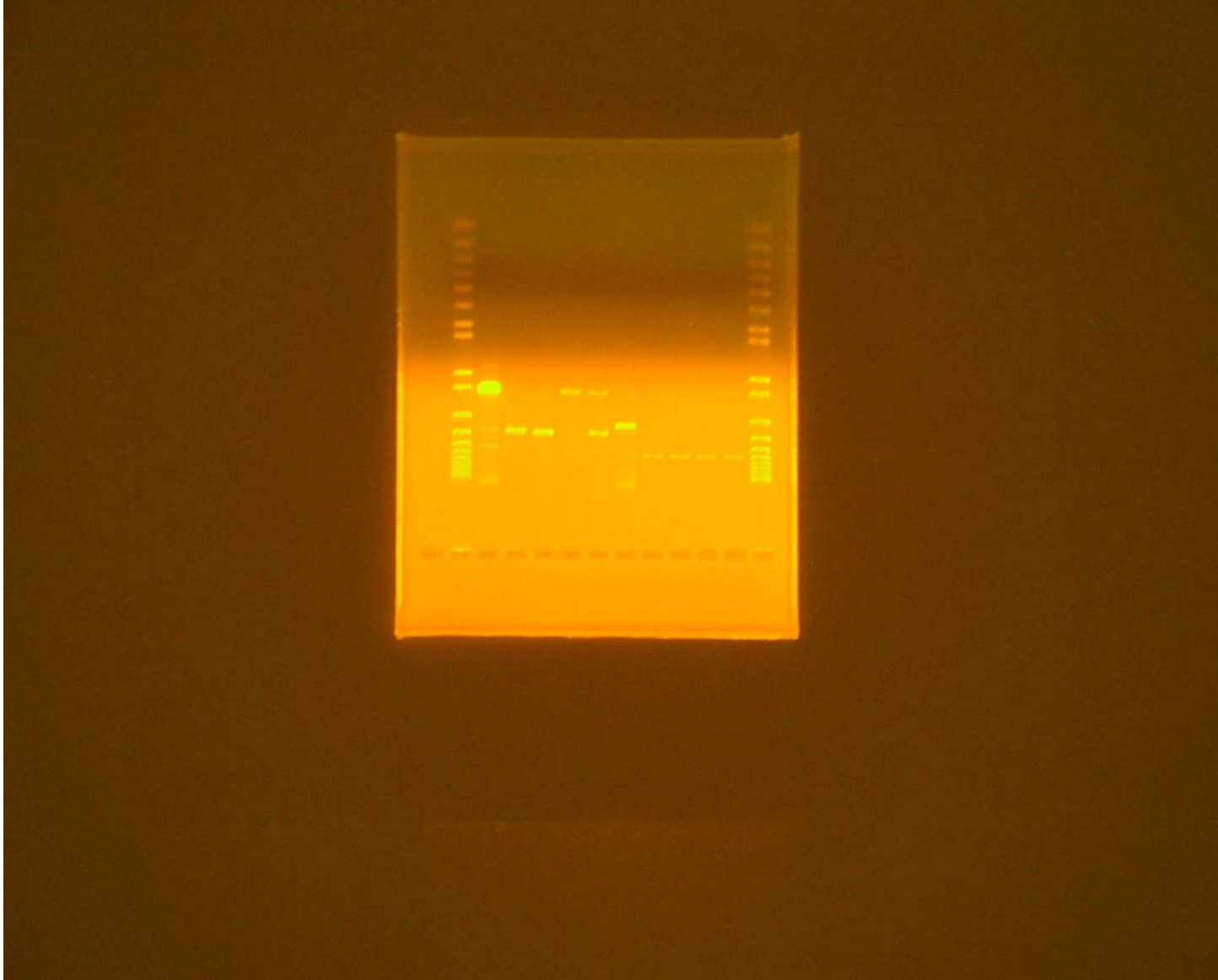
- Taught Nick how to run gel according to the protocol on 7/27/09
- Ran gel of digested lambda and T4 killer genes with EcoRI only, BglII only, PstI only and EcoRI/BglII

### *Digest lambda and T4 killer genes*

- Ran digest according to the protocol on 7/25/09
- Digested lambda and T4 killer genes with EcoRI/PstI, EcoRI/XhoI and XhoI only
- Digested according to ANNDIGEST PCR program

## Results

*Gel of digest of lambda and T4 killer gene to check the part length*



Lane 1 (farthest to the right): invitrogen 1 kb plus ladder

Lane 2: lambda digested with EcoRI only

Lane 3: lambda digested with BglIII only

Lane 4: lambda digested with PstI only

Lane 5: lambda digested with EcoRI and BglIII

Lane 6: uncut lambda plasmid from miniprep

Lane 7: T4 digested with EcoRI only  
Lane 8: T4 digested with BglII only  
Lane 9: T4 digested with PstI only  
Lane 10: T4 digested with EcoRI and BglII  
Lane 11: uncut T4 plasmid from miniprep  
Lane 12: invitrogen 1 kb plus ladder

Expected Product length (Assuming BBb standard on openwetware:  
[http://openwetware.org/wiki/Template:AndersonLab:BBb\\_Standard](http://openwetware.org/wiki/Template:AndersonLab:BBb_Standard))

- Lambda
  - Part: 1499 bp
  - Plasmid: 3344 bp
  - Space between prefix/suffix and part: 18 bp
  - Digests
    - EcoRI only: 4861 bp
    - BglII only: 4861 bp
    - PstI only: uncut (misinterpreted BBb standard )
    - Eco and BglII: 4852 bp (misinterpreted BBb standard)
- T4
  - Part: 1785 bp
  - Plasmid: 2079 bp
  - Spaces between prefix/suffix and part: 18 bp
  - Digests
    - EcoRI only: 3882 bp
    - BglII only: 3882 bp
    - PstI only: uncut (misinterpreted BBb standard)
    - Eco and BglII: 3873 bp (misinterpreted BBb standard)