

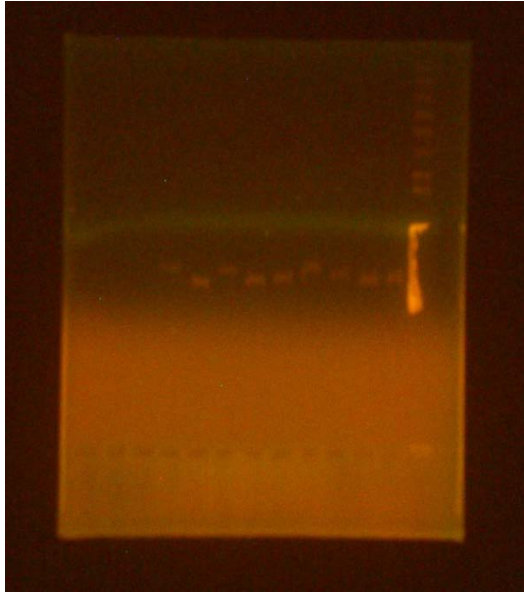
Tuesday 9/15/09

Gel of digested Pu GFP leu landing pad ligation with EcoRI

A gel was run according to the protocol on 7/27/09. TBE buffer was used instead of TAE and the voltage was set for 74 for better resolution.

Result

Gel of digested Pu GFP leu landing pad ligation with EcoRI



Lane 1: Invitrogen 1 kb plus ladder (far right)

Lane 2: 1:1 #1 ligation

Lane 3: 1:1 #2 ligation

Lane 4: 1:1 #3 ligation

Lane 5: 1:3 #1 ligation

Lane 6: 1:3 #2 ligation

Lane 7: 1:3 #3 ligation

Lane 8: 1:6 #1 ligation

Lane 9: 1:6 #2 ligation

Lane 10: 1:6 #3 ligation

The expected length of the product is 7193 bp

Since something went wrong with the ladder, the gel will have to be run again in fresh TAE buffer.

When this gel is run again, the digested leu landing pad backbone will also be used as a reference to determine which samples may contain the uncut plasmid.